



Home Disaster Sensor User Guide

Home Disaster Sensor is a full featured tri-mode environmental sensing transmitter with industry leading wireless range and battery life. It is used to sense flood, freeze or overheat conditions.

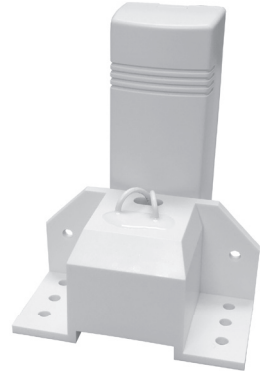
Features

- Industry leading wireless range and battery life
- Secure encrypted wireless transmissions
- Tri-Mode
- 3 year warranty

Enroll by sending an enrollment signal from the sensor with the help of an installation specialist

Options for sending an enrollment signal

- Remove the battery tab, OR
- Remove the cover to trip tamper



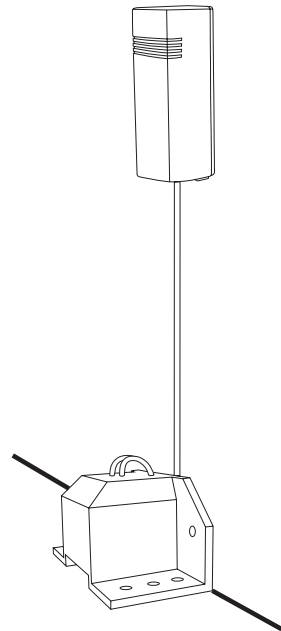
Install by mounting the flood sensor (with the two titanium contacts against the ground) using the attached 3M VHB tape to adhere to the floor. Extend the cable and mount the larger sensor as high as possible using the attached 3M VHB tape to adhere the sensor

- See **Pro Tips** for recommendations about using 3M VHB tape

Alarm Types

- Flood alarm when liquid rises 0.040 inches (0.10 cm) above flood sensor
- Low temperature alarm when room temperature drops below 40 °F (4.5 °C)
- High temperature alarm when room temperature rises above 100 °F (38 °C)

Alarms restore when liquid is cleared or temperature increases/decreases by 4 °F (2 °C)



Pro Tips

To replace the battery remove the cover by depressing the top with your finger. Replace battery and reinstall the cover.

3M VHB Tape works great if the surface is properly prepared and firm pressure is applied for over 10 seconds

Surface Preparation

- Clean the surface
- Ensure the mounting surface temperature is above 50 °F (10 °C)

Specifications

Physical	
Housing Dimensions	3.3 x 1.4 x1 inches (8.3 x 3.5 x 2.5 cm)
Weight with Battery	4 ounces (113 grams)
Mounting Fastener	3M VHB tape or #6/#8 screws (not provided)
Environmental	
Operating Temperature	32 to 120 °F (0 to 49 °C)
Maximum Humidity	85% non-condensing relative humidity
Sensor Specifications	
Frequency	423.92 MHz
Replacement Battery	One CR123A
Nominal Battery Life	8-10 years
Battery Voltage	3.0 VDC (nominal), 2.2 VDC (low)
Transmitted Indications	Cover Tamper, Low Battery, Supervision

Specifications subject to change without notice



HOME DISASTER SENSOR – 010

Tech Support:

1-855-76-THINK

(1-855-768-4465)

www.thinkprotection.com